

# COMPANY PROFILE



Egypt Edu Travel

## ABOUT OUR COMPANY

**BUSINESS,  
ADMINISTRATIVE  
& CONTACT INFORMATION**



# EDU TRAVEL **EGYPT**

**BUSINESS NAME**

Edu Travel Egypt

**BUSINESS TYPE**

Private Company

**MINISTRY OF TOURISM LICENSE NUMBER**

1906

**COMPANY REGISTRATION NUMBER**

24246

**TAX REGISTRATION NUMBER**

320804259

**CELL**

+201117378888

**PHYSICAL ADDRESS**06 Khalil St From Esraa El Moalemin , Lebanon Square,  
El Mohandesin - Cairo, Egypt.**TELEPHONE**

(+202)33037599

**EMAIL**

info@egyptianedutravel.com ▶



**COMPANY**

**HISTORY**



A Family owned business has started its operations in 2007





## COMPANY HISTORY

- ▶ A Family owned business has started its operations in 2007 by Its' own sole founder Mr. Romani Gaballa, Whom he is a Certified Egyptologist since 1993, Under the name Egyptian Educational Travel (EET), He dreamt of establishing an Egyptian travel company that serves purposeful travel. As he believes that if something can bring the world together, it is the Travel & Hospitality industry. Very soon the company has expanded its services to many tour operators and educational & religious foundations and has always provided first class services to its clients. It has built its reputation on the trust of its clients and suppliers. The company has strived to always develop its travel programs and train its own staff to render its remarkable service; this has positioned the company to be, Though, not the biggest but one of the best DMC in the Egyptian market. Soon in 2010 we have started its sister company, Arch Angels Travel as our Tourist transport company and started a Fleet of travel Vehicles of latest models, multiple sizes

# COMPANY BRIEF



## WHAT THE COMPANY DOES

A destination management company specialized in handling ground operations for regular incoming groups, Also Groups from Ocean Cruises on behalf of Its Tour Operators partners.



## COMPANY

## MISSION

- ▶ Our company to always be the most trusted DMC for the clients of our partner Tour Operators from regular incoming and tours from ocean cruise lines.

## VISION

We indulge you in Egypt history, culture and provide unique itineraries, to fulfill your clients' history, educational or faith travel purposes and return home inspired by a memorable travel experience

# COMPANY VALUES

Top quality services

Integrity

Trustworthy

Partnerships with clients &  
suppliers





# BUSINESS GOALS & OBJECTIVES



Maintain our current portfolio of clients and expand our services to new clients

# BUSINESS STRATEGY

- ▶ Improve the quality of our services, Include new pool of suppliers, Upscale the capacity of knowledge & experience of our team Participate in exhibitions, attend related conferences and set up face to face appointments



## BUSINESS CONCEPT

- ▶ A destination management company specialized in handling ground operations for incoming groups of all travel interests as well as off-shore excursions from ocean cruises.

## COMPANY SERVICES



▶ **INCOMING TOUR  
OPERATOR**



**CRUISE LINES  
GROUND HANDLING**



**LEISURE, CULTURAL,  
RELIGIOUS & EDUCATIONAL  
TRAVEL**



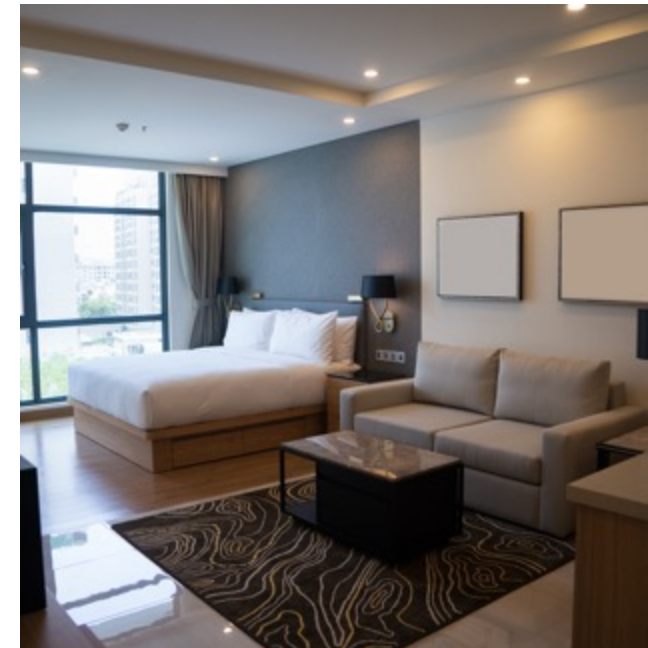
# COMPANY SERVICES



▶ AIRLINE BOOKING



NILE CRUISE BOOKING



HOTEL BOOKING

# COMPANY SERVICES



► MEET & ASSIST SERVICES

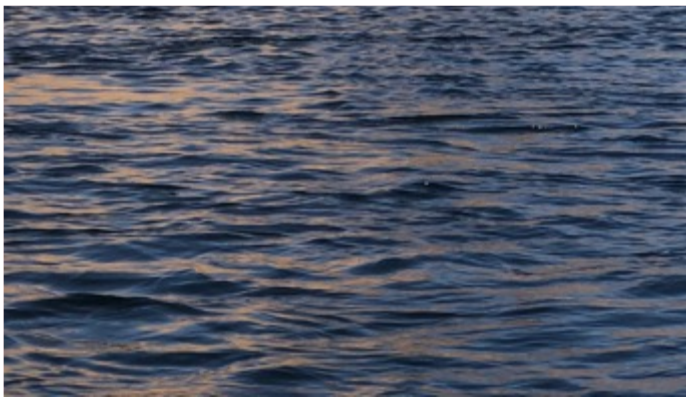


INCENTIVES &  
CONFERENCES SERVICES



CAR/BUS RENTAL



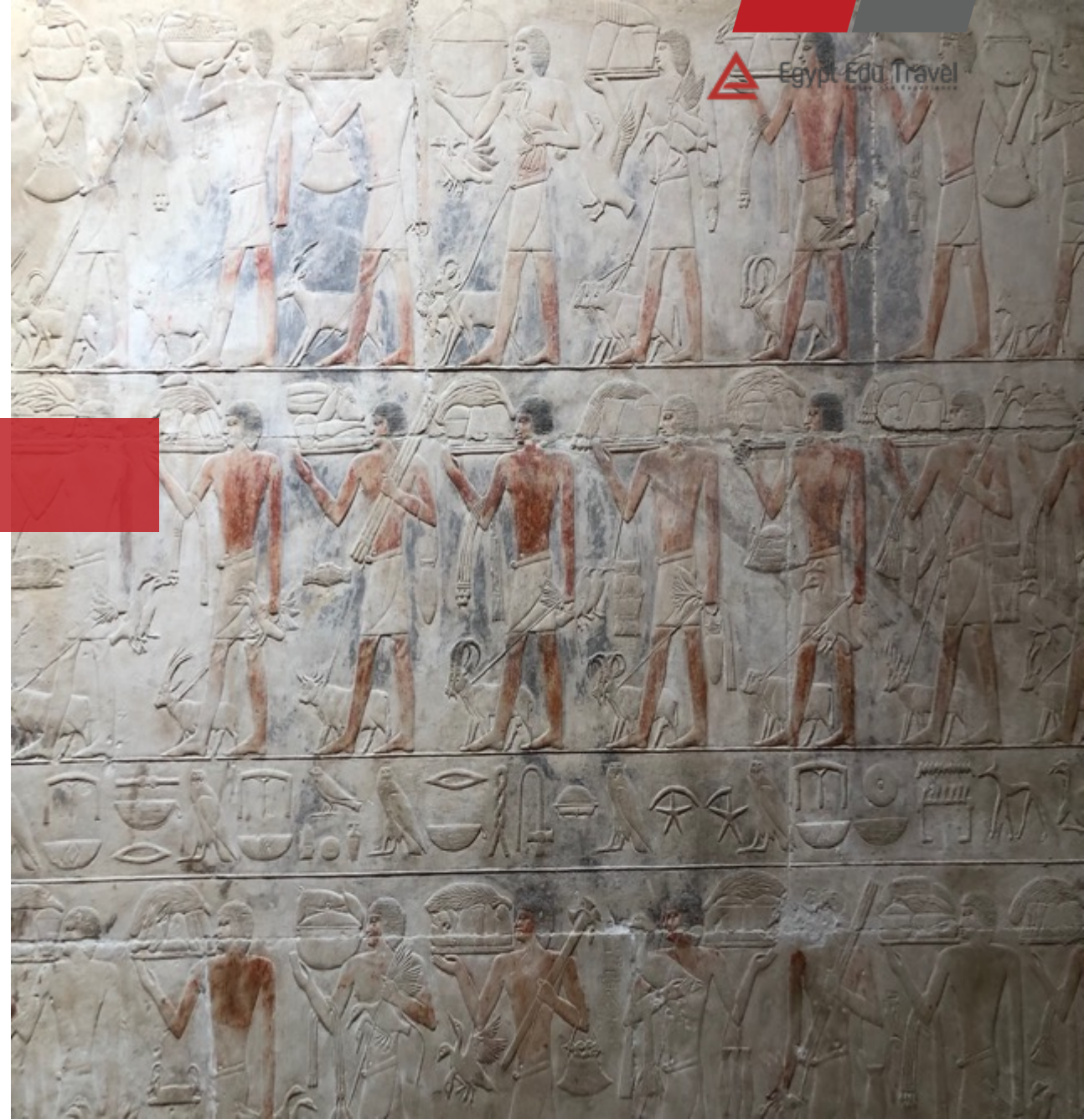


## BUSINESS COMPETITIVENESS

- ▶ The company is one of the best receptive tour operators specialized in handling worldwide incoming groups. The excellent service and the extensive experience in the field have set the company to be one of the most preferred DMC for tour operators who seek un-parallel experience for their clients. The long-term and strong integration with our suppliers is giving us an edge on our competitors in terms of competitive rates and distinctive services, another edge that we are proud of is our well trained staff members

## SERVICE PLEDGE

The company has its own fleet of vehicles, well trained office and ground staff, knowledgeable and experienced Egyptologists covering different speaking languages and a network of offices spread all over the Tourist Destinations in Egypt.





## BUSINESS MODEL

The company applies a de-centralized model in its operations through our offices that are spread all over Egypt; however the management is centralized in Cairo to ensure the consistency in the quality of services provided and to monitor the execution of its operations.





## VALUE CHAIN



The company maintains the values provided to its clients through the following processes





## DESIGNING NEW TRAVEL ITINERARIES

We always add new travel itineraries for all travel interests that makes Egypt appealing to more travelers, also enhance existing travel itineraries For more memorable & enjoyable travel experience.

## STAFF SELECTING & TRAINING PROCESS

Excellent English speaking skills/Ability to withstand and handle stress/ Presentable / problem solving ability and good communication skills  
Provide them with a clear job description, monitoring their duties, Performing their duties under supervision and finally operating independently

## EGYPTOLOGISTS SELECTION CRITERIA

Dynamic Personality (high level of energy) /Reliability & Honesty / friendly & outgoing attitude /highly organized /Excellent knowledge in language, geography, history and culture /High ability to work and communicate with others / Empathy and patience /ability to handle stress /good sense of humor.



## ACCOMMODATION

Provide accommodations in well-known hotel chains centrally located with High security measures provided to ensure guest comfort and high hygiene standards.



## SECURITY MEASURES

Providing security personnel escorting all excursions and all vehicles are Being monitored by GPS tracking system.





## TRANSPORTATION

Provide recent models of transportation accompanied with well-trained Drivers and insurance coverage. The company inspectors ensures the cleanliness of the vehicles provided.



## INSURANCE

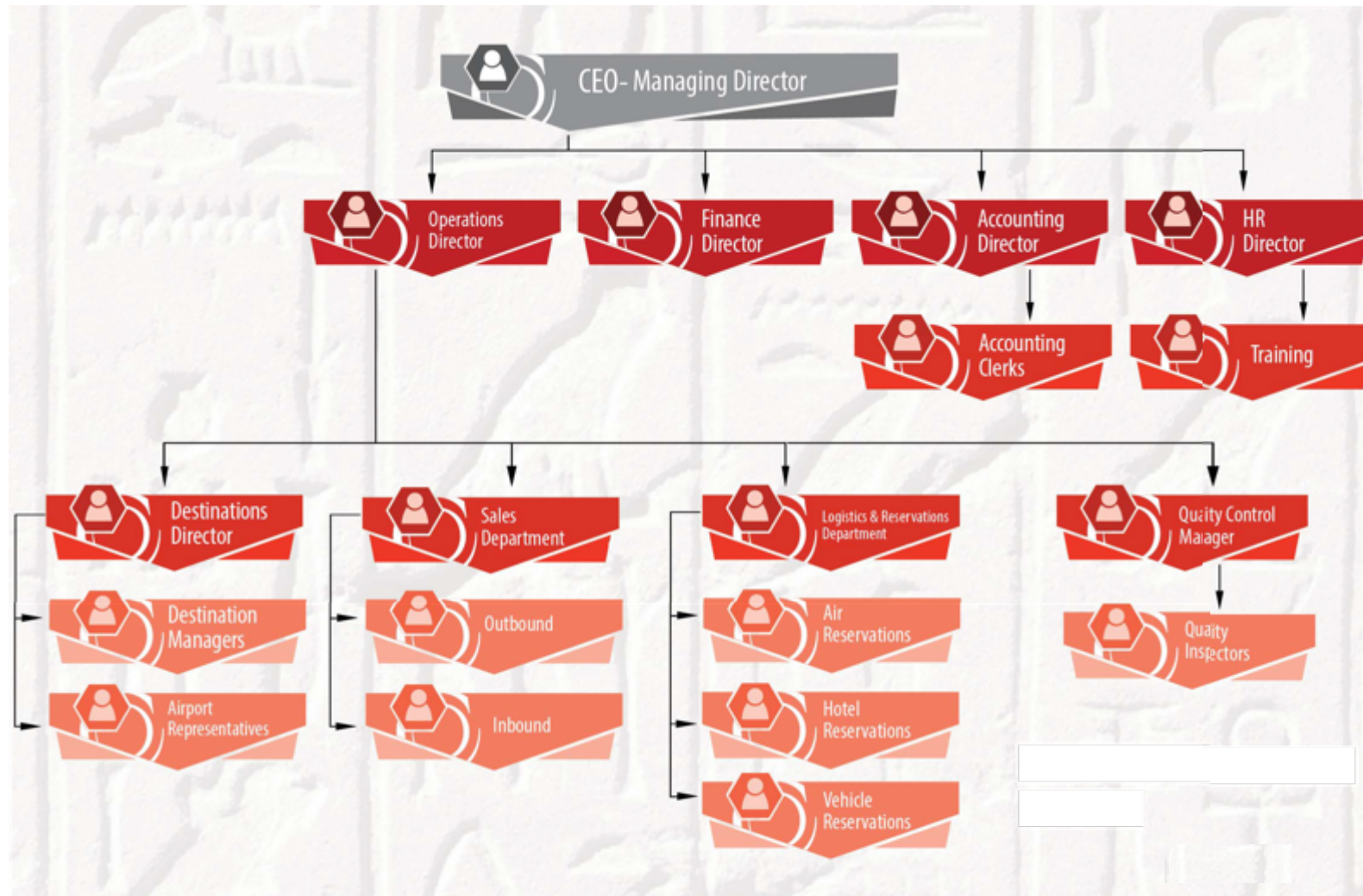
The company possess a third party liability insurance policy that covers Our guests during their whole stay on the Egyptian soil.



## MEALS

All restaurants used are being pre-inspected to ensure high quality meals And hygiene, that serves the best quality foods, local, and regional and international

# ORGANIZATIONAL CHART





## CAIRO OFFICE

 06 Khalil St From Esraa El Moalemin , Lebanon Square, El Mohandesin,  
Cairo, Egypt.

 (+202) 33037599, (+20) 111737888

 [www.egyptianedutavel.com](http://www.egyptianedutavel.com)

 [romani@egyptianedutavel.com](mailto:romani@egyptianedutavel.com), [info@egyptianedutavel.com](mailto:info@egyptianedutavel.com)